

HONGPU GONIOPHOTOMETERS SYSTEM TEST REPORT

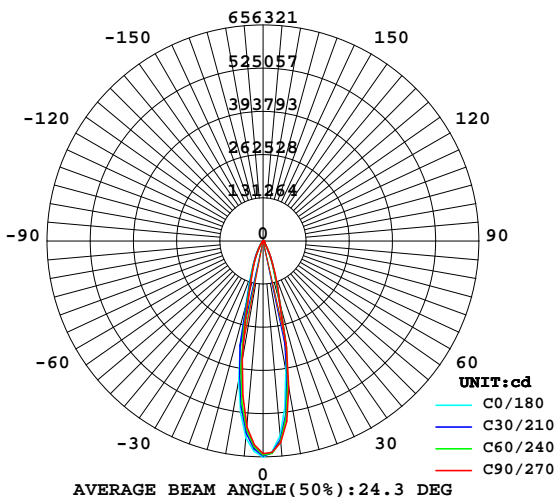
LUMINAIRE PHOTOMETRIC TEST REPORT

Report number:

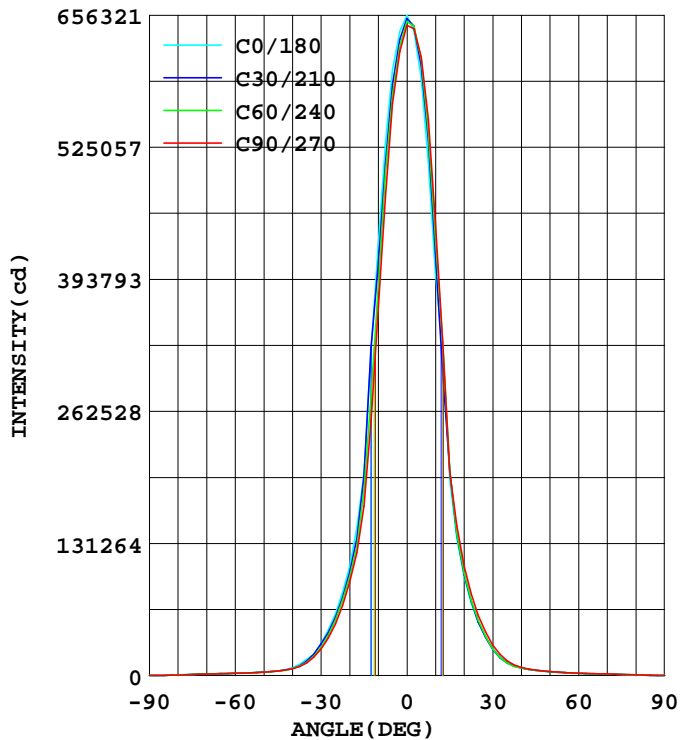
MANUFACTURER:	Address:	
NAME: 1000w	TYPE:	WEIGHT:
SPECIFICATION:	DIMENSION:	SERIAL No.:

DATA OF LAMP		Imax(cd)	656321	S/MH(C0/180)	0.39
MODEL		EFFICIENCY(%)	100.0	S/MH(C90/270)	0.37
NOMINAL POWER(W)	1000W	TOTAL FLUX(lm)	156693	Voltage(V)	118.4
RATED VOLTAGE(V)	118	EFFICIENCY(lm/W)	1042.5	Current(A)	1.278
NOMINAL FLUX(lm)	156692.7	η up(%)	0.7	Power(W)	150.3
LAMPS QUANTITY	1	η down(%)	99.3	Power Factor(PF)	0.993
TEST VOLTAGE(V)	118.4	Effictive Flux(lm)	121429.1	EEl	0.017

LUMINOUS INTENSITY DISTRIBUTION



LUMINOUS INTENSITY DISTRIBUTION



Test System:HOP00 HPG1800
 Temperature:25.3DEG
 Operators:
 Test Date:2018年10月24日

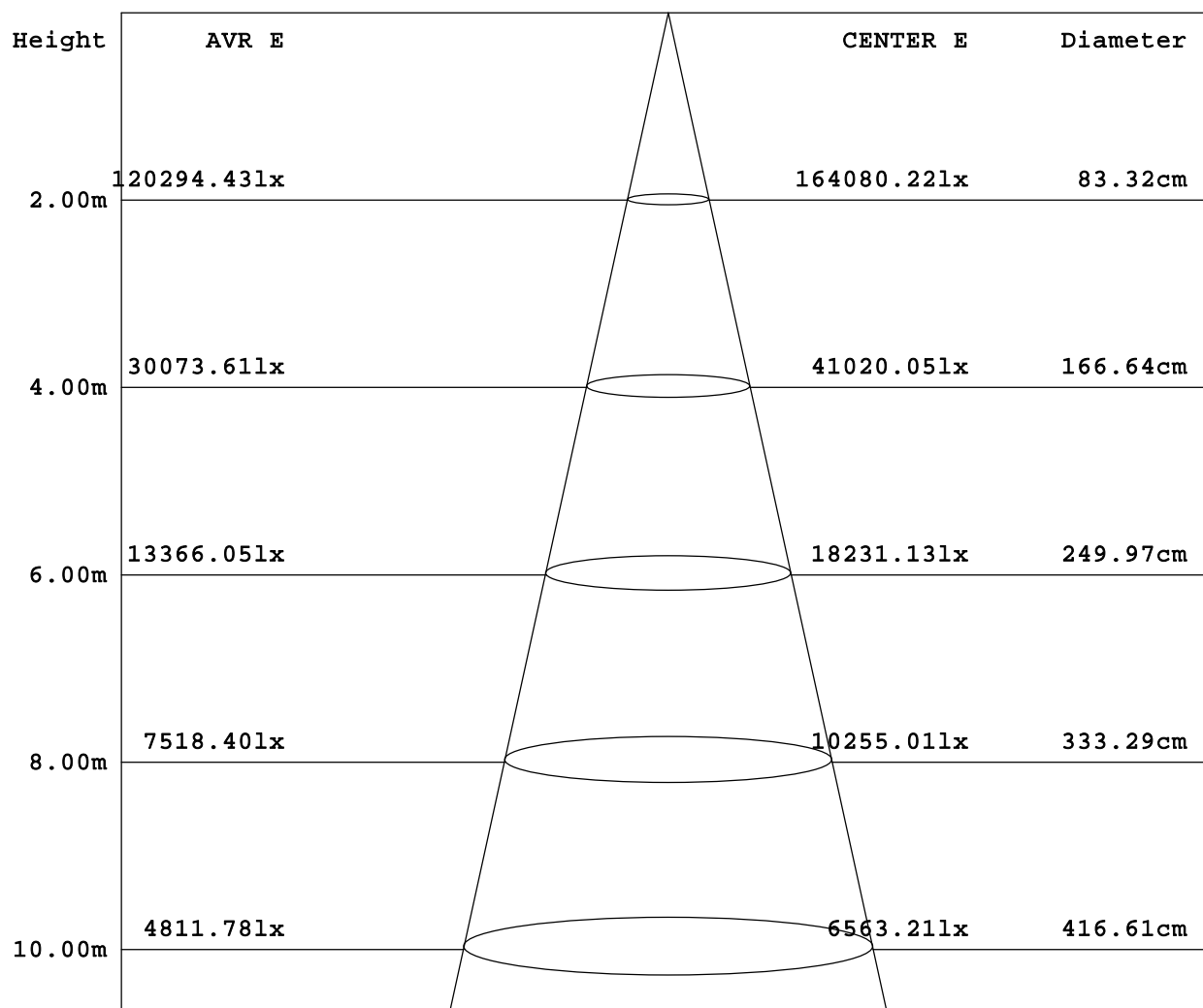
Test Set: 5.0deg/s C-Gamma (TYPE C)
 Humidity:65.0%
 Test Distance:8.370 m
 Remarks:

HONGPU GONIOPHOTOMETERS SYSTEM TEST REPORT

AVERAGE AND CENTER E Figure

Report number:

MANUFACTURER:	Address:	
NAME: 1000w	TYPE:	WEIGHT:
SPECIFICATION:	DIMENSION:	SERIAL No.:



Angle: 23.5deg

Test System:HOPOO HPG1800
 Temperature:25.3DEG
 Operators:
 Test Date:2018年10月24日

Test Set: 5.0deg/s C-Gamma (TYPE C)
 Humidity:65.0%
 Test Distance:8.370 m
 Remarks:

HONGPU GONIOPHOTOMETERS SYSTEM TEST REPORT

ZONAL FLUX DIAGRAM

Report number:

MANUFACTURER:	Address:	
NAME: 1000w	TYPE:	WEIGHT:
SPECIFICATION:	DIMENSION:	SERIAL No.:

γ	C0	C45	C90	C135	C180	C225	C270	C315	γ	Φ zone	Φ total
5.0	6018	5819	5684	5615	5936	6090	6144	6053	0- 5	14807	14807
10.0	4300	3994	3667	3611	4011	4281	4506	4469	5- 10	35790	50597
15.0	2010	1910	1686	1733	1942	2035	2021	2161	10- 15	35348	85944
20.0	1083	1001	927.4	916.5	985.0	1012	1085	1136	15- 20	23353	109297
25.0	614.6	565.9	514.9	501.2	532.0	539.1	596.7	633.9	20- 25	16131	125428
30.0	321.0	298.8	265.2	261.5	269.9	263.6	305.3	331.6	25- 30	10467	135896
35.0	159.0	138.0	127.1	134.6	138.1	125.6	147.6	167.9	30- 35	6043	141939
40.0	78.51	68.79	68.59	76.21	79.26	74.40	80.18	88.55	35- 40	3523	145462
45.0	47.61	45.00	44.85	48.35	52.03	52.70	54.58	53.24	40- 45	2285	147747
50.0	36.42	34.91	34.31	36.13	37.90	39.26	40.62	39.67	45- 50	1740	149487
55.0	28.62	27.51	26.58	28.62	29.67	29.38	30.43	30.18	50- 55	1436	150923
60.0	23.11	22.57	22.29	22.86	22.44	22.37	23.16	23.41	55- 60	1179	152103
65.0	19.74	19.23	18.93	19.15	18.90	18.60	19.43	20.01	60- 65	1022	153124
70.0	16.31	15.56	15.15	15.23	15.25	15.05	15.98	16.39	65- 70	883.2	154007
75.0	12.09	11.26	10.82	10.86	11.06	11.26	12.29	12.41	70- 75	709.4	154717
80.0	7.334	6.586	6.072	6.250	6.652	7.082	7.884	7.910	75- 80	493.7	155210
85.0	3.101	2.517	2.056	2.335	2.621	3.294	3.525	3.584	80- 85	264.4	155475
90.0	0.701	0.483	0.401	0.488	0.537	0.642	0.811	0.778	85- 90	85.49	155560
95.0	0.348	0.296	0.279	0.315	0.277	0.306	0.354	0.307	90- 95	22.87	155583
100.0	0.275	0.244	0.230	0.261	0.210	0.229	0.259	0.227	95-100	14.84	155598
105.0	0.244	0.235	0.234	0.248	0.180	0.193	0.201	0.191	100-105	12.08	155610
110.0	0.275	0.274	0.287	0.284	0.197	0.190	0.200	0.191	105-110	11.69	155622
115.0	0.338	0.343	0.370	0.365	0.228	0.211	0.219	0.216	110-115	13.14	155635
120.0	0.450	0.454	0.498	0.505	0.277	0.243	0.247	0.255	115-120	15.68	155651
125.0	0.649	0.655	0.732	0.759	0.377	0.316	0.308	0.333	120-125	20.08	155671
130.0	0.998	1.037	1.162	1.214	0.577	0.482	0.443	0.491	125-130	28.10	155699
135.0	1.649	1.759	1.926	2.030	0.911	0.790	0.675	0.770	130-135	42.13	155741
140.0	2.742	3.044	3.193	3.365	1.438	1.319	1.062	1.249	135-140	63.75	155805
145.0	4.273	4.792	4.980	5.188	2.419	2.219	1.779	2.084	140-145	93.71	155898
150.0	6.220	6.963	7.085	7.267	3.813	3.525	3.047	3.318	145-150	127.3	156026
155.0	8.200	9.063	9.157	9.184	5.348	5.057	4.496	4.741	150-155	153.1	156179
160.0	9.809	10.53	10.71	10.45	6.960	6.602	6.117	6.208	155-160	161.2	156340
165.0	10.83	11.09	11.32	10.83	8.254	7.840	7.639	7.489	160-165	147.3	156488
170.0	10.96	10.77	11.01	10.43	9.078	8.613	8.621	8.274	165-170	113.2	156601
175.0	10.59	10.09	10.36	9.777	9.625	9.059	9.181	8.746	170-175	68.95	156670
180.0	10.09	9.500	9.744	9.211	10.12	9.487	9.697	9.200	175-180	22.87	156693
DEG	LUMINOUS INTENSITY:×100cd									UNIT:lm	

Test System:HOPPO HPG1800
 Temperature:25.3DEG
 Operators:
 Test Date:2018年10月24日

Test Set: 5.0deg/s C-Gamma (TYPE C)
 Humidity:65.0%
 Test Distance:8.370 m
 Remarks:

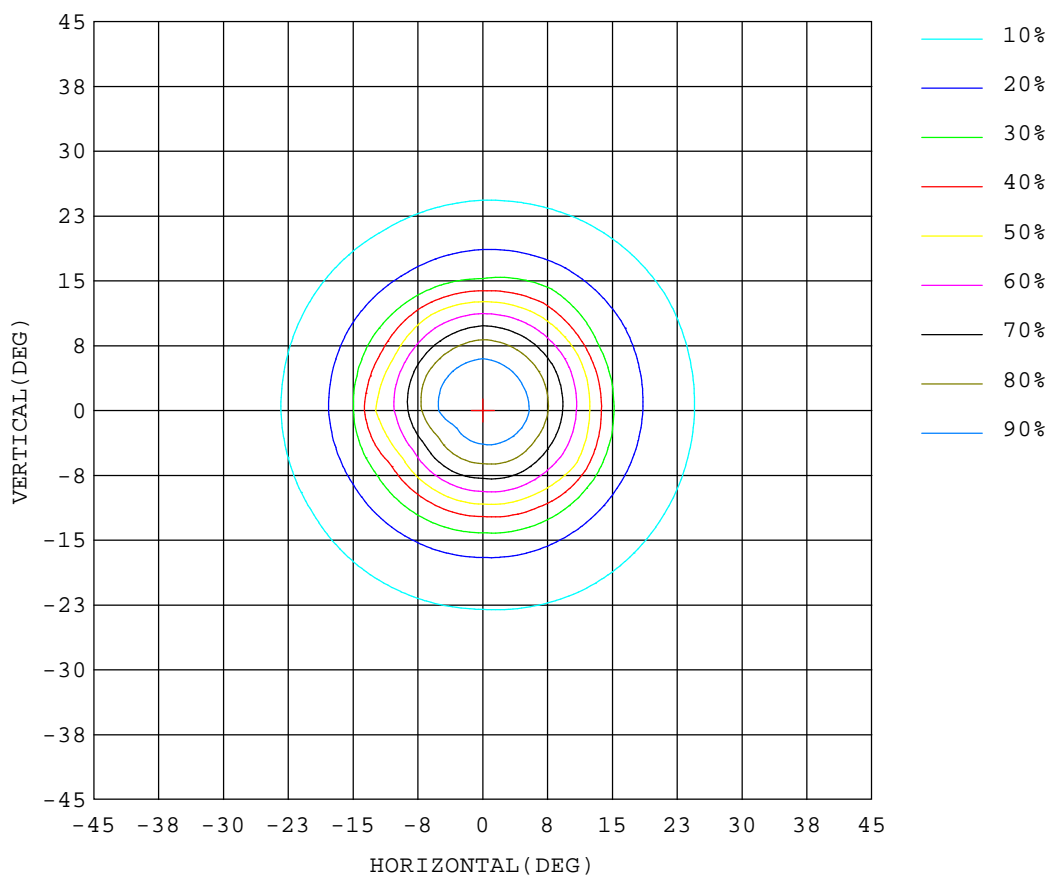
HONGPU GONIOPHOTOMETERS SYSTEM TEST REPORT

ISOCANDELA DIAGRAM

Report number:

MANUFACTURER:	Address:	
NAME: 1000w	TYPE:	WEIGHT:
SPECIFICATION:	DIMENSION:	SERIAL No.:

UNIT: cd



Test System:HOPOO HPG1800
 Temperature:25.3DEG
 Operators:
 Test Date:2018年10月24日

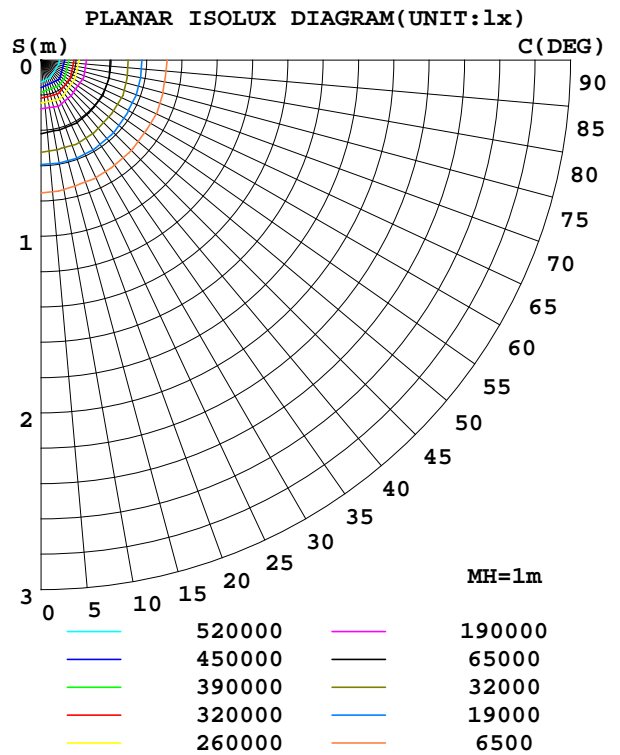
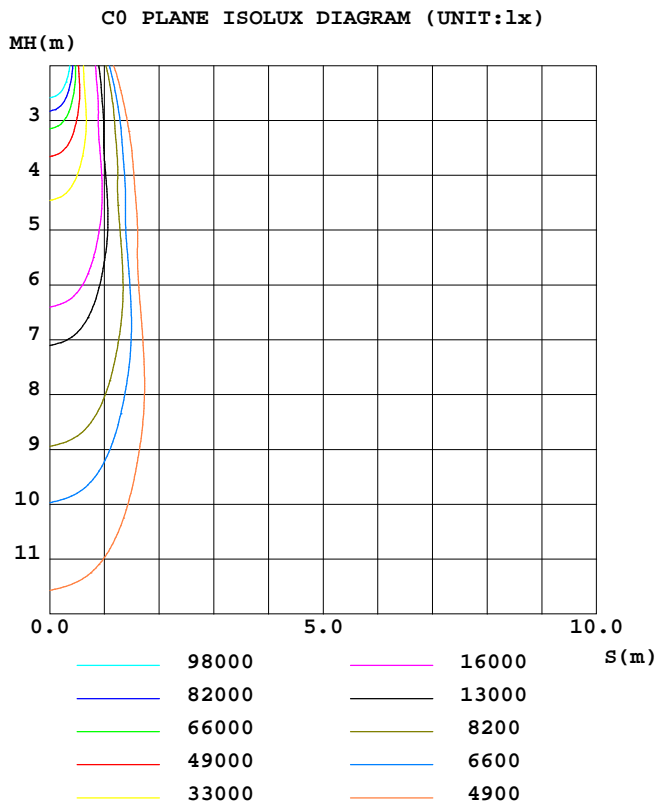
Test Set: 5.0deg/s C-Gamma (TYPE C)
 Humidity:65.0%
 Test Distance:8.370 m
 Remarks:

HONGPU GONIOPHOTOMETERS SYSTEM TEST REPORT

ISOLUX DIAGRAM

Report number:

MANUFACTURER:	Address:	
NAME: 1000w	TYPE:	WEIGHT:
SPECIFICATION:	DIMENSION:	SERIAL No.:



Test System:HOP00 HPG1800
 Temperature:25.3DEG
 Operators:
 Test Date:2018年10月24日

Test Set: 5.0deg/s C-Gamma (TYPE C)
 Humidity:65.0%
 Test Distance:8.370 m
 Remarks:

HONGPU GONIOPHOTOMETERS SYSTEM TEST REPORT

LUMINOUS DISTRIBUTION INTENSITY DATA

Report number:

MANUFACTURER:	Address:	
NAME: 1000w	TYPE:	WEIGHT:
SPECIFICATION:	DIMENSION:	SERIAL No.:

UNIT: ×100cd

γ (DEG)	C (DEG)											
	0	30	60	90	120	150	180	210	240	270	300	330
0.0	6563	6530	6502	6463	6440	6410	6563	6530	6502	6463	6440	6410
5.0	6018	5871	5768	5684	5625	5605	5936	6055	6125	6144	6084	6022
10.0	4300	4104	3884	3667	3609	3614	4011	4203	4358	4506	4488	4450
15.0	2010	1983	1838	1686	1717	1749	1942	2033	2037	2021	2285	2038
20.0	1083	1023	979	927	909	924	985	1003	1020	1085	1136	1136
25.0	615	581	551	515	502	501	532	530	548	597	626	642
30.0	321	317	280	265	261	262	270	262	266	305	320	343
35.0	159	145	131	127	133	136	138	126	126	148	163	173
40.0	78.5	69.7	67.7	68.5	74.7	77.6	79.2	75.1	73.6	80.1	87.3	89.7
45.0	47.6	45.3	44.7	44.8	46.9	49.7	52.0	52.6	52.7	54.5	53.8	52.6
50.0	36.4	35.1	34.6	34.3	35.5	36.7	37.9	38.6	39.8	40.6	40.0	39.3
55.0	28.6	27.5	27.4	26.5	27.7	29.4	29.6	28.8	29.9	30.4	30.1	30.1
60.0	23.1	22.6	22.5	22.2	22.8	22.8	22.4	22.3	22.4	23.1	23.3	23.4
65.0	19.7	19.3	19.1	18.9	19.2	19.0	18.9	18.5	18.6	19.4	19.7	20.2
70.0	16.3	15.6	15.5	15.1	15.3	15.1	15.2	15.0	15.0	15.9	16.1	16.6
75.0	12.0	11.3	11.1	10.8	10.8	10.8	11.0	11.3	11.2	12.2	12.1	12.6
80.0	7.33	6.64	6.52	6.07	6.27	6.22	6.65	7.07	7.08	7.88	7.79	8.02
85.0	3.10	2.50	2.53	2.05	2.40	2.27	2.62	3.08	3.50	3.52	3.57	3.59
90.0	0.70	0.48	0.49	0.40	0.50	0.47	0.54	0.71	0.58	0.81	0.70	0.86
95.0	0.35	0.27	0.32	0.28	0.33	0.30	0.28	0.33	0.28	0.35	0.27	0.34
100.0	0.28	0.23	0.26	0.23	0.27	0.25	0.21	0.25	0.21	0.26	0.21	0.25
105.0	0.24	0.23	0.24	0.23	0.26	0.24	0.18	0.21	0.18	0.20	0.18	0.21
110.0	0.27	0.27	0.28	0.29	0.29	0.28	0.20	0.20	0.18	0.20	0.18	0.20
115.0	0.34	0.35	0.34	0.37	0.36	0.37	0.23	0.21	0.21	0.22	0.21	0.22
120.0	0.45	0.47	0.44	0.50	0.49	0.51	0.28	0.24	0.25	0.25	0.25	0.26
125.0	0.65	0.67	0.64	0.73	0.74	0.78	0.38	0.31	0.32	0.31	0.33	0.33
130.0	1.00	1.06	1.00	1.16	1.16	1.26	0.58	0.48	0.48	0.44	0.49	0.49
135.0	1.64	1.77	1.73	1.92	1.96	2.09	0.91	0.80	0.78	0.68	0.78	0.76
140.0	2.74	2.99	3.09	3.19	3.29	3.43	1.43	1.36	1.27	1.06	1.26	1.23
145.0	4.27	4.76	4.82	4.98	5.12	5.25	2.41	2.28	2.14	1.77	2.10	2.06
150.0	6.22	6.84	7.07	7.08	7.28	7.24	3.81	3.65	3.39	3.04	3.33	3.30
155.0	8.20	8.88	9.24	9.15	9.25	9.11	5.34	5.23	4.87	4.49	4.77	4.70
160.0	9.80	10.3	10.7	10.7	10.5	10.3	6.96	6.74	6.46	6.11	6.30	6.11
165.0	10.8	10.9	11.2	11.3	10.9	10.7	8.25	7.95	7.72	7.63	7.60	7.37
170.0	10.9	10.7	10.8	11.0	10.5	10.3	9.07	8.72	8.50	8.62	8.42	8.12
175.0	10.5	10.1	10.0	10.3	9.86	9.68	9.62	9.17	8.93	9.18	8.87	8.61
180.0	10.0	9.63	9.36	9.74	9.28	9.13	10.1	9.58	9.39	9.69	9.30	9.09

Test System:HOPOO HPG1800
 Temperature:25.3DEG
 Operators:
 Test Date:2018年10月24日

Test Set: 5.0deg/s C-Gamma (TYPE C)
 Humidity:65.0%
 Test Distance:8.370 m
 Remarks: