

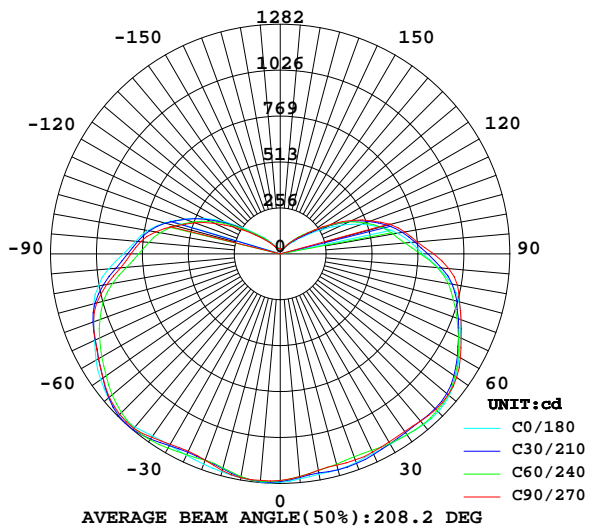
LUMINAIRE PHOTOMETRIC TEST REPORT

Report number:

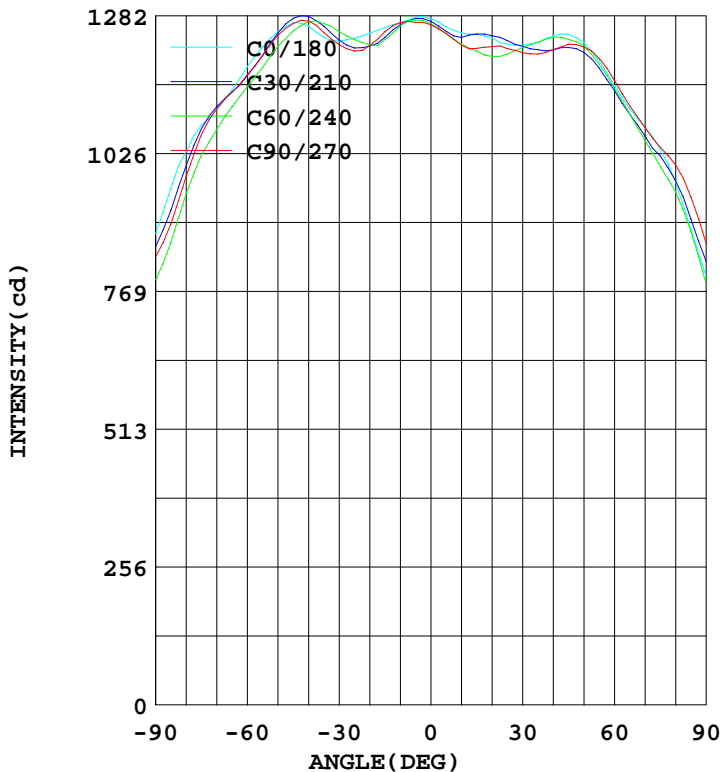
MANUFACTURER:	Address:	
NAME:	TYPE:	WEIGHT:
SPECIFICATION:	DIMENSION:	SERIAL No.:

DATA OF LAMP		Imax(cd)	1282	S/MH(C0/180)	1.51
MODEL		EFFICIENCY(%)	100.0	S/MH(C90/270)	1.53
NOMINAL POWER(W)	80	TOTAL FLUX(lm)	9288.1	Voltage(V)	110.0
RATED VOLTAGE(V)	110	EFFICIENCY(lm/W)	118.4	Current(A)	0.717
NOMINAL FLUX(lm)	9288.2	η up(%)	24.3	Power(W)	78.41
LAMPS QUANTITY	1	η down(%)	75.7	Power Factor(PF)	0.993
TEST VOLTAGE(V)	110.1	Effective Flux(lm)	9177.9	EEL	0.116

LUMINOUS INTENSITY DISTRIBUTION



LUMINOUS INTENSITY DISTRIBUTION



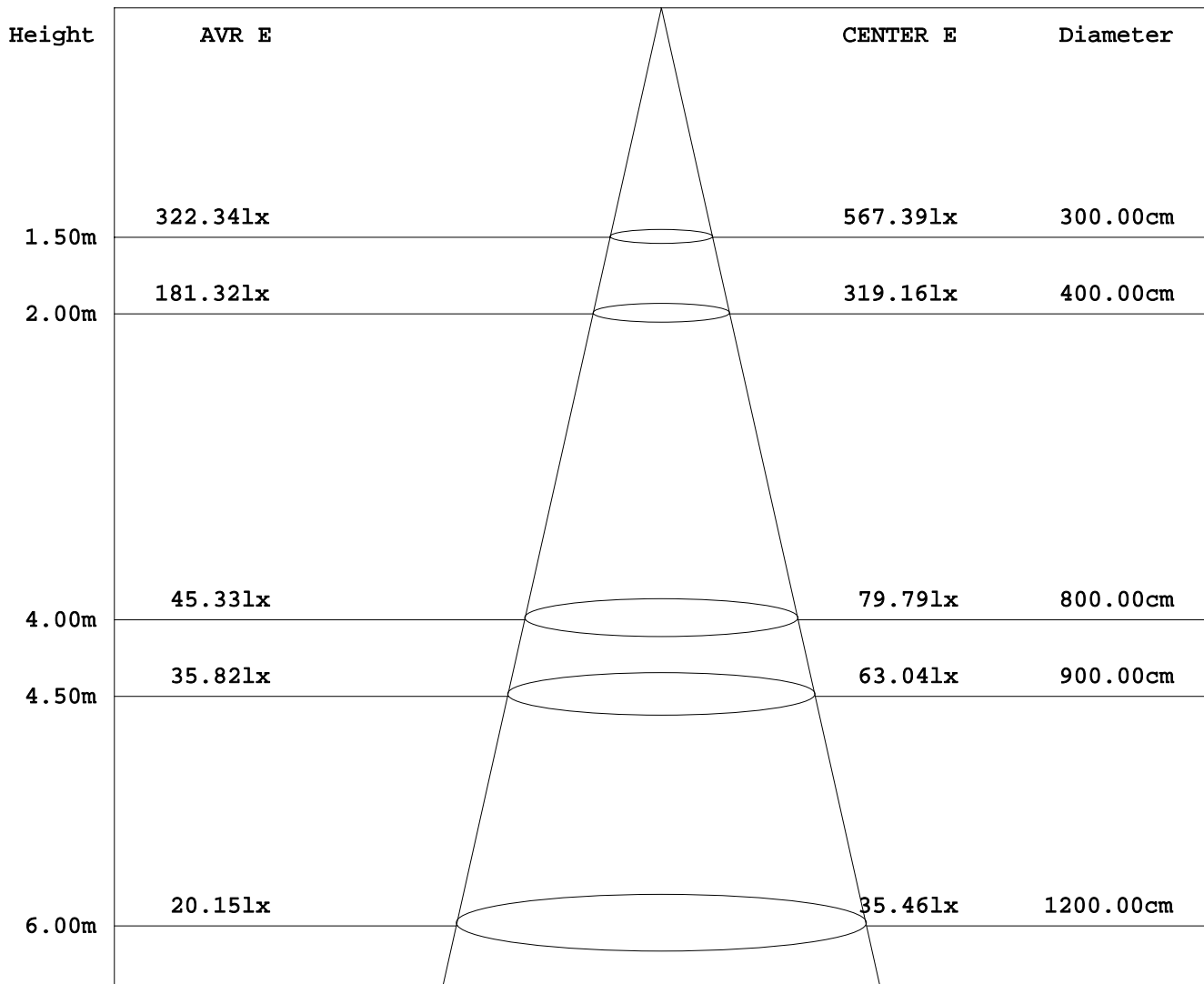
Test System:HOPOO HPG1800
 Temperature:25.3DEG
 Operators:
 Test Date:2016年09月29日

Test Set: 8.0deg/s C-Gamma (TYPE C)
 Humidity:65.0%
 Test Distance:6.000 m
 Remarks:

AVERAGE AND CENTER E Figure

Report number:

MANUFACTURER:	Address:	
NAME:	TYPE:	WEIGHT:
SPECIFICATION:	DIMENSION:	SERIAL No.:



Angle:90.0deg

Test System:HOPPO HPG1800
 Temperature:25.3DEG
 Operators:
 Test Date:2016年09月29日

Test Set: 8.0deg/s C-Gamma (TYPE C)
 Humidity:65.0%
 Test Distance:6.000 m
 Remarks:

HONGPU GONIOPHOTOMETERS SYSTEM TEST REPORT

ZONAL FLUX DIAGRAM

Report number:

MANUFACTURER:	Address:	
NAME:	TYPE:	WEIGHT:
SPECIFICATION:	DIMENSION:	SERIAL No.:

γ	C0	C45	C90	C135	C180	C225	C270	C315	γ	Φ zone	Φ total
5.0	1280	1276	1270	1258	1261	1251	1250	1253	0- 5	30.22	30.22
10.0	1270	1265	1270	1250	1250	1236	1227	1244	5- 10	89.83	120.0
15.0	1261	1240	1253	1231	1248	1232	1222	1239	10- 15	147.6	267.7
20.0	1250	1227	1227	1221	1241	1226	1225	1226	15- 20	203.2	470.9
25.0	1241	1230	1217	1226	1229	1223	1221	1216	20- 25	257.2	728.2
30.0	1235	1245	1229	1238	1227	1225	1214	1209	25- 30	310.3	1039
35.0	1243	1266	1251	1253	1233	1226	1211	1208	30- 35	362.9	1401
40.0	1263	1276	1272	1262	1245	1231	1219	1218	35- 40	414.6	1816
45.0	1270	1266	1268	1251	1247	1231	1229	1229	40- 45	462.4	2279
50.0	1253	1238	1246	1224	1232	1220	1225	1221	45- 50	501.0	2780
55.0	1224	1198	1208	1195	1198	1188	1203	1195	50- 55	528.3	3308
60.0	1188	1161	1173	1156	1152	1145	1162	1148	55- 60	544.7	3853
65.0	1144	1127	1140	1120	1109	1099	1115	1098	60- 65	552.5	4405
70.0	1108	1092	1109	1077	1075	1055	1074	1045	65- 70	555.0	4960
75.0	1079	1048	1062	1029	1034	1012	1037	1011	70- 75	551.6	5512
80.0	1030	977.8	983.7	961.5	973.5	964.7	1005	968.1	75- 80	538.9	6051
85.0	961.6	890.2	894.9	874.7	884.8	891.9	944.8	898.7	80- 85	511.1	6562
90.0	876.4	821.9	834.1	807.0	796.6	803.3	857.5	809.7	85- 90	470.7	7033
95.0	810.7	768.0	782.9	752.2	733.5	727.3	767.8	732.4	90- 95	430.7	7463
100.0	752.6	711.6	706.8	694.9	665.7	665.7	706.4	668.6	95-100	393.7	7857
105.0	669.5	636.0	607.0	620.4	579.6	600.8	636.2	604.3	100-105	351.4	8209
110.0	569.3	542.7	508.5	527.6	487.1	517.4	540.4	524.7	105-110	299.4	8508
115.0	465.4	442.7	403.0	425.4	380.8	427.3	442.8	436.3	110-115	243.1	8751
120.0	357.9	335.4	301.6	318.9	275.7	315.7	335.4	327.7	115-120	183.0	8934
125.0	252.9	230.3	209.0	219.3	190.5	221.3	232.9	233.8	120-125	126.1	9060
130.0	166.9	158.5	140.7	150.9	133.5	154.3	155.1	160.9	125-130	81.27	9142
135.0	125.0	114.2	99.36	106.6	88.52	109.4	112.7	115.8	130-135	53.30	9195
140.0	89.31	77.99	68.58	71.76	59.47	73.54	79.09	78.93	135-140	33.88	9229
145.0	60.87	52.57	46.47	48.70	38.37	45.52	51.22	49.30	140-145	20.64	9250
150.0	42.26	37.96	35.60	36.61	29.34	31.13	34.77	32.43	145-150	12.13	9262
155.0	35.35	34.34	33.62	34.54	28.69	28.87	29.95	28.67	150-155	8.315	9270
160.0	34.12	33.28	32.86	33.78	28.94	28.87	29.77	28.53	155-160	6.600	9277
165.0	33.01	32.32	32.04	32.90	29.30	28.96	29.66	28.61	160-165	5.112	9282
170.0	32.07	31.21	30.96	31.60	29.37	29.05	29.55	28.88	165-170	3.627	9285
175.0	30.85	30.18	29.69	29.91	28.90	28.94	29.77	28.29	170-175	2.144	9287
180.0	28.72	27.95	27.36	27.72	28.44	27.91	28.40	27.73	175-180	0.692	9288
DEG	LUMINOUS INTENSITY:cd									UNIT:lm	

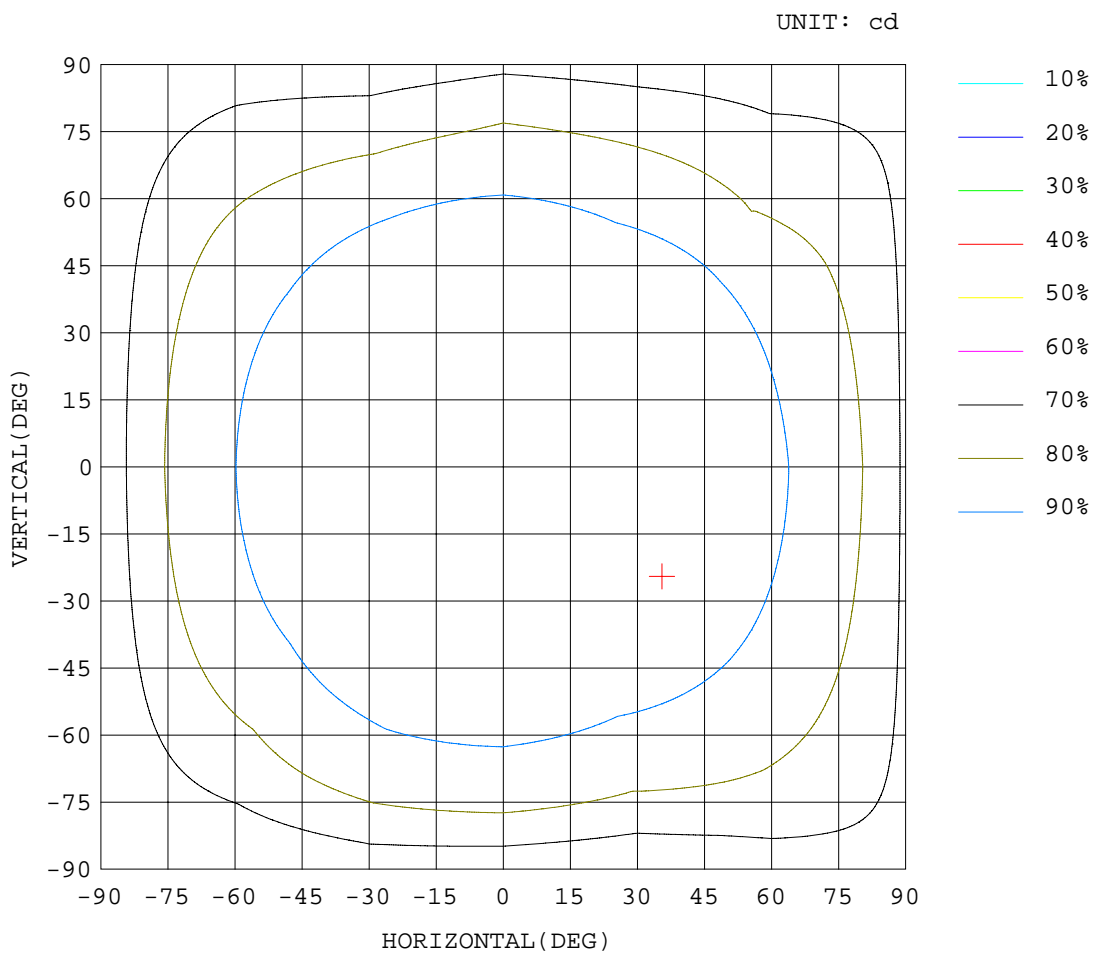
Test System:HOPPO HPG1800
 Temperature:25.3DEG
 Operators:
 Test Date:2016年09月29日

Test Set: 8.0deg/s C-Gamma (TYPE C)
 Humidity:65.0%
 Test Distance:6.000 m
 Remarks:

ISOCANDELA DIAGRAM

Report number:

MANUFACTURER:	Address:	
NAME:	TYPE:	WEIGHT:
SPECIFICATION:	DIMENSION:	SERIAL No.:



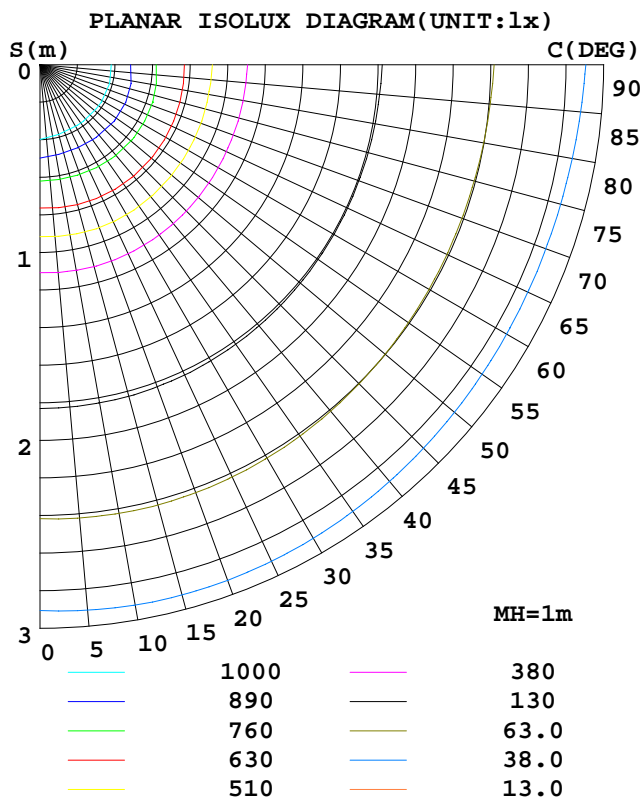
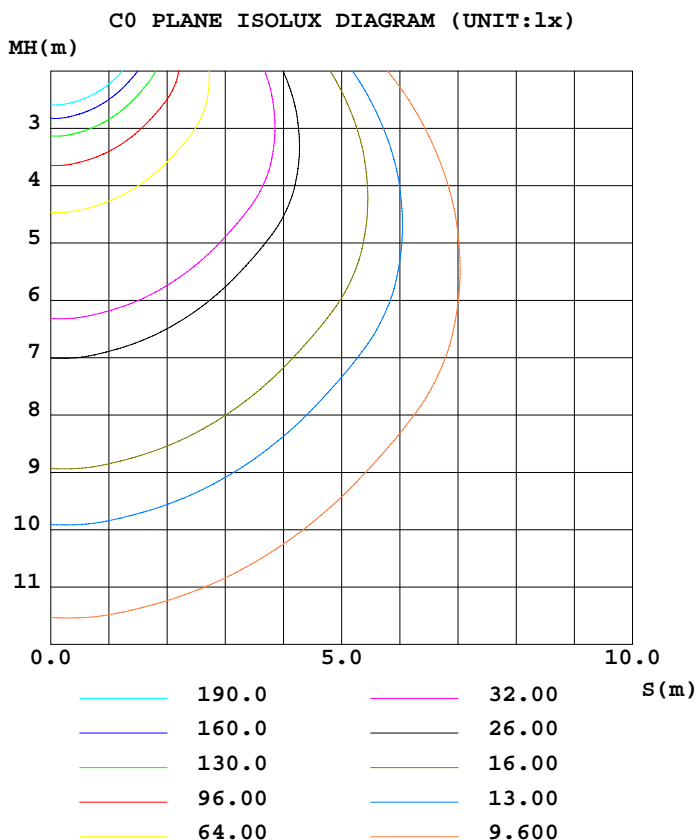
Test System:HOPOO HPG1800
 Temperature:25.3DEG
 Operators:
 Test Date:2016年09月29日

Test Set: 8.0deg/s C-Gamma (TYPE C)
 Humidity:65.0%
 Test Distance:6.000 m
 Remarks:

ISOLUX DIAGRAM

Report number:

MANUFACTURER:	Address:	
NAME:	TYPE:	WEIGHT:
SPECIFICATION:	DIMENSION:	SERIAL No.:



Test System:HOPPO HPG1800
 Temperature:25.3DEG
 Operators:
 Test Date:2016年09月29日

Test Set: 8.0deg/s C-Gamma (TYPE C)
 Humidity:65.0%
 Test Distance:6.000 m
 Remarks:

HONGPU GONIOPHOTOMETERS SYSTEM TEST REPORT

LUMINOUS DISTRIBUTION INTENSITY DATA

Report number:

MANUFACTURER:	Address:	
NAME:	TYPE:	WEIGHT:
SPECIFICATION:	DIMENSION:	SERIAL No.:

UNIT: cd

γ (DEG)	C (DEG)											
	0	30	60	90	120	150	180	210	240	270	300	330
0.0	1277	1272	1267	1265	1262	1258	1277	1272	1267	1265	1262	1258
5.0	1280	1277	1275	1270	1263	1253	1261	1253	1249	1250	1252	1255
10.0	1270	1266	1264	1270	1256	1244	1250	1242	1229	1227	1241	1248
15.0	1261	1243	1238	1253	1235	1227	1248	1248	1217	1222	1238	1241
20.0	1250	1226	1228	1227	1225	1217	1241	1245	1207	1225	1230	1222
25.0	1241	1222	1238	1217	1222	1229	1229	1236	1211	1221	1210	1221
30.0	1235	1237	1253	1229	1234	1243	1227	1226	1223	1214	1197	1221
35.0	1243	1263	1268	1251	1251	1255	1233	1219	1233	1211	1196	1220
40.0	1263	1281	1271	1272	1259	1264	1245	1219	1242	1219	1206	1231
45.0	1270	1278	1254	1268	1248	1255	1247	1223	1238	1229	1217	1242
50.0	1253	1250	1226	1246	1228	1221	1232	1214	1227	1225	1211	1231
55.0	1224	1209	1187	1208	1200	1190	1198	1185	1192	1203	1190	1200
60.0	1188	1172	1151	1173	1169	1143	1152	1143	1147	1162	1139	1157
65.0	1144	1141	1113	1140	1137	1102	1109	1099	1099	1115	1096	1101
70.0	1108	1113	1071	1109	1099	1056	1075	1059	1051	1074	1057	1033
75.0	1079	1072	1024	1062	1051	1007	1034	1022	1002	1037	1019	1003
80.0	1030	1004	952	984	982	941	974	975	954	1005	976	960
85.0	962	920	861	895	899	851	885	904	880	945	909	888
90.0	876	853	791	834	842	772	797	825	782	858	819	800
95.0	811	799	737	783	794	711	734	755	699	768	744	721
100.0	753	741	682	707	734	656	666	693	639	706	683	654
105.0	670	664	608	607	653	588	580	621	581	636	612	596
110.0	569	565	521	509	553	502	487	530	504	540	525	524
115.0	465	457	428	403	448	403	381	428	426	443	433	439
120.0	358	342	329	302	326	312	276	313	319	335	322	334
125.0	253	228	232	209	218	221	191	211	232	233	226	241
130.0	167	151	167	141	147	155	134	143	166	155	147	174
135.0	125	109	120	99.3	107	106	88.5	102	117	113	105	127
140.0	89.3	76.7	79.2	68.5	75.3	68.1	59.4	69.8	77.2	79.0	72.1	85.7
145.0	60.8	52.6	52.5	46.4	52.7	44.6	38.3	45.2	45.7	51.2	45.5	53.1
150.0	42.2	37.1	38.7	35.6	39.0	34.1	29.3	32.8	29.4	34.7	30.4	34.3
155.0	35.3	32.8	35.8	33.6	36.2	32.8	28.6	30.6	27.1	29.9	27.0	30.2
160.0	34.1	31.9	34.5	32.8	35.3	32.2	28.9	30.4	27.3	29.7	27.2	29.7
165.0	33.0	31.2	33.4	32.0	34.3	31.4	29.3	30.3	27.6	29.6	27.5	29.6
170.0	32.0	30.1	32.2	30.9	32.5	30.6	29.3	30.1	27.9	29.5	27.9	29.8
175.0	30.8	29.4	30.8	29.6	31.5	28.2	28.9	29.9	27.9	29.7	27.9	28.6
180.0	28.7	27.5	28.3	27.3	28.3	27.1	28.4	28.4	27.3	28.4	27.3	28.1

Test System:HOPOO HPG1800
 Temperature:25.3DEG
 Operators:
 Test Date:2016年09月29日

Test Set: 8.0deg/s C-Gamma (TYPE C)
 Humidity:65.0%
 Test Distance:6.000 m
 Remarks: