

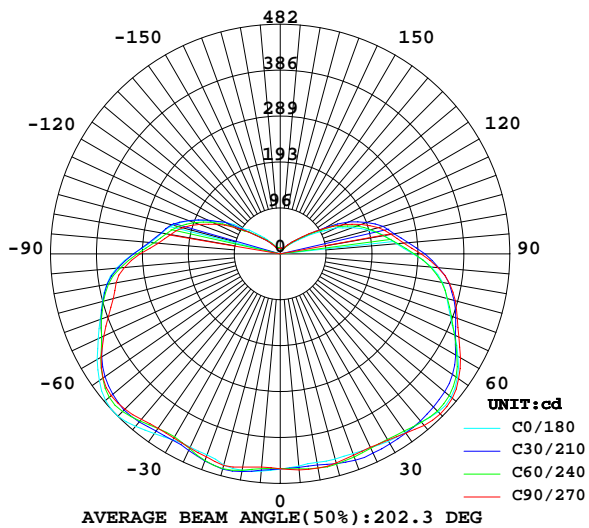
LUMINAIRE PHOTOMETRIC TEST REPORT

Report number:

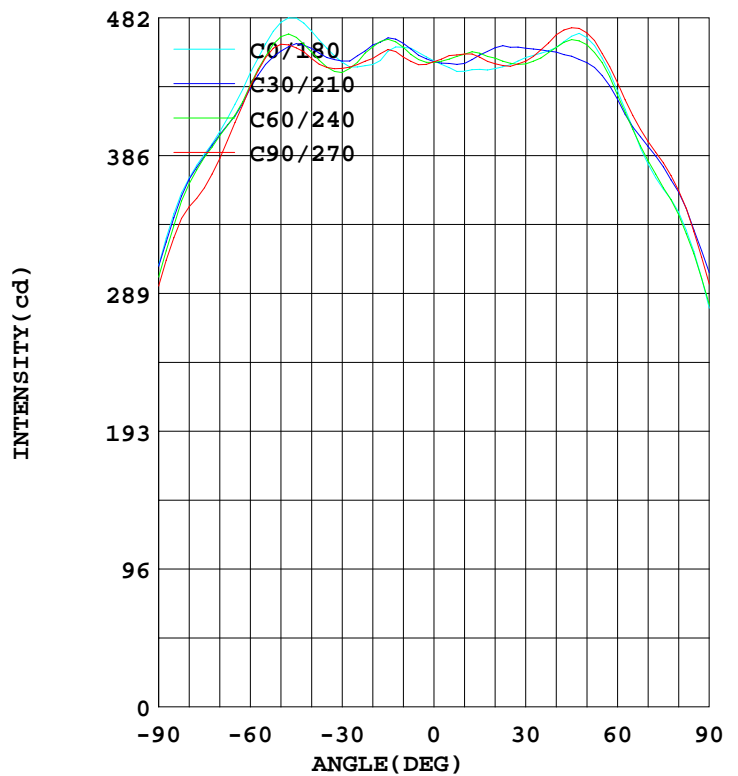
MANUFACTURER:	Address:	
NAME:	TYPE:	WEIGHT:
SPECIFICATION:	DIMENSION:	SERIAL No.:

DATA OF LAMP		Imax(cd)	482.1	S/MH(C0/180)	1.59
MODEL		EFFICIENCY(%)	100.0	S/MH(C90/270)	1.53
NOMINAL POWER(W)	30	TOTAL FLUX(lm)	3386.1	Voltage(V)	110.3
RATED VOLTAGE(V)	110	EFFICIENCY(lm/W)	110.1	Current(A)	0.281
NOMINAL FLUX(lm)	3386.1	$\eta$ up(%)	23.4	Power(W)	30.75
LAMPS QUANTITY	1	$\eta$ down(%)	76.6	Power Factor(PF)	0.992
TEST VOLTAGE(V)	110.3	Effictive Flux(lm)	3338.1	EEL	0.125

LUMINOUS INTENSITY DISTRIBUTION



LUMINOUS INTENSITY DISTRIBUTION



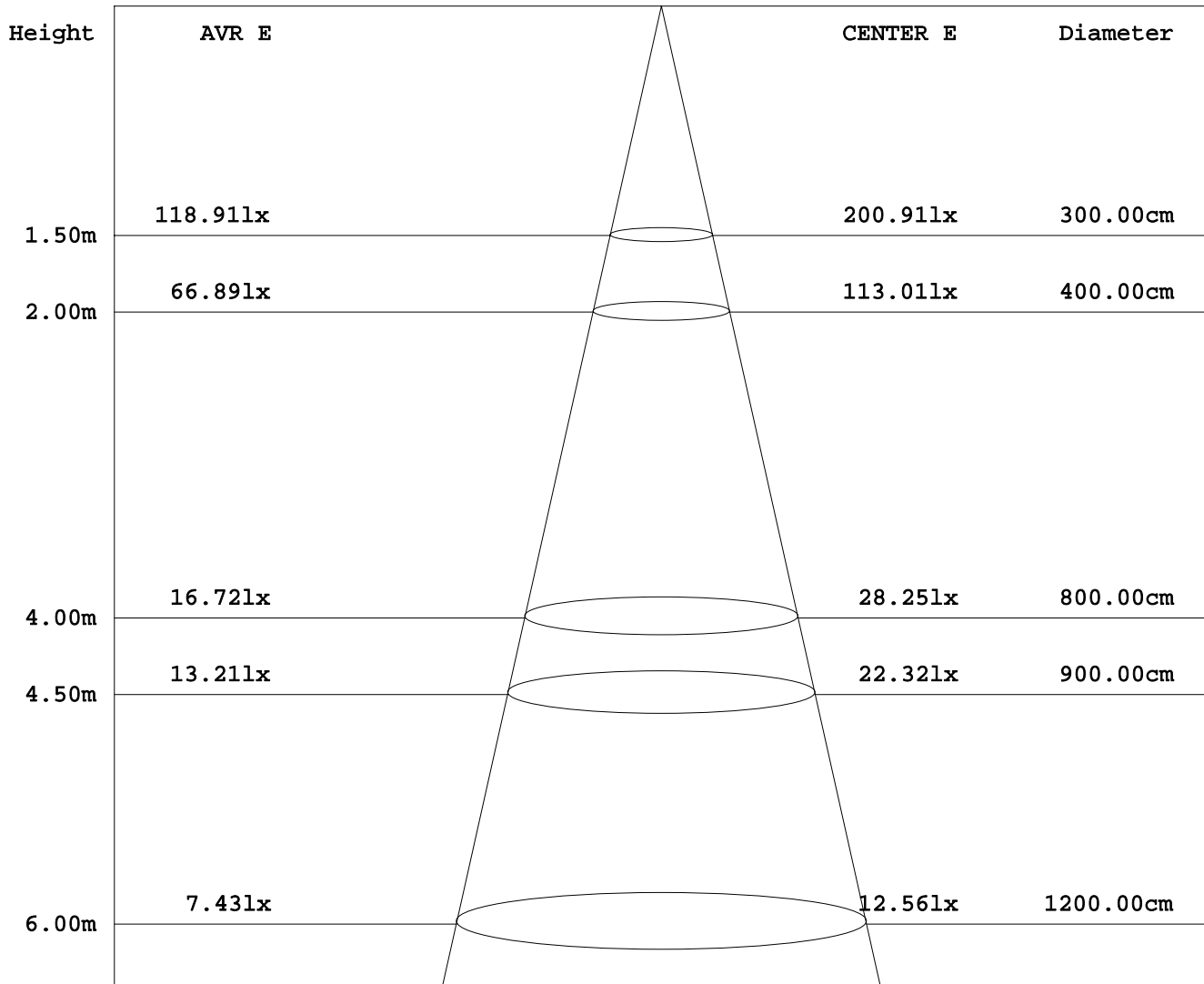
Test System:HOPOO HPG1800  
 Temperature:25.3DEG  
 Operators:  
 Test Date:2016年09月29日

Test Set: 8.0deg/s C-Gamma (TYPE C)  
 Humidity:65.0%  
 Test Distance:6.000 m  
 Remarks:

AVERAGE AND CENTER E Figure

Report number:

MANUFACTURER:	Address:	
NAME:	TYPE:	WEIGHT:
SPECIFICATION:	DIMENSION:	SERIAL No.:



Angle:90.0deg

Test System:HOPPO HPG1800  
 Temperature:25.3DEG  
 Operators:  
 Test Date:2016年09月29日

Test Set: 8.0deg/s C-Gamma (TYPE C)  
 Humidity:65.0%  
 Test Distance:6.000 m  
 Remarks:

HONGPU GONIOPHOTOMETERS SYSTEM TEST REPORT

ZONAL FLUX DIAGRAM

Report number:

MANUFACTURER:	Address:	
NAME:	TYPE:	WEIGHT:
SPECIFICATION:	DIMENSION:	SERIAL No.:

$\gamma$	C0	C45	C90	C135	C180	C225	C270	C315	$\gamma$	$\Phi$ zone	$\Phi$ total
5.0	457.8	454.4	449.3	446.8	447.3	451.6	455.6	458.9	0- 5	10.81	10.81
10.0	461.4	462.9	454.7	444.8	444.7	453.4	456.8	462.4	5- 10	32.48	43.30
15.0	458.8	467.6	459.9	449.4	446.1	456.7	454.5	461.8	10- 15	54.21	97.51
20.0	449.4	462.4	453.7	453.4	446.5	457.5	449.9	456.9	15- 20	75.20	172.7
25.0	447.8	453.2	449.4	455.5	449.3	455.8	448.2	452.5	20- 25	95.17	267.8
30.0	451.1	447.8	446.7	454.0	454.3	455.4	451.7	455.5	25- 30	114.4	382.3
35.0	460.8	450.9	447.4	452.0	457.4	456.8	459.7	460.8	30- 35	133.6	516.0
40.0	472.8	459.4	453.6	452.5	461.4	459.7	470.2	465.0	35- 40	152.8	668.9
45.0	481.8	466.2	461.1	455.7	469.2	461.0	475.2	463.1	40- 45	171.5	840.5
50.0	478.9	463.8	463.6	455.2	468.2	457.0	471.6	453.5	45- 50	187.4	1028
55.0	463.8	452.3	454.2	449.1	453.9	446.2	457.1	439.2	50- 55	198.5	1227
60.0	443.8	434.0	434.3	435.2	431.0	426.7	436.8	422.0	55- 60	204.0	1431
65.0	421.7	413.7	408.8	413.3	404.9	404.8	413.7	407.7	60- 65	204.6	1635
70.0	402.4	400.0	383.7	392.0	379.9	387.2	395.6	393.7	65- 70	203.2	1839
75.0	386.6	384.9	363.1	375.4	362.1	370.5	380.6	377.0	70- 75	200.7	2039
80.0	370.0	367.6	350.0	360.1	346.1	352.4	361.2	355.5	75- 80	196.4	2236
85.0	345.0	339.4	328.2	336.8	318.5	325.3	332.4	322.2	80- 85	187.7	2424
90.0	309.0	304.4	294.4	306.2	279.0	292.6	295.8	285.9	85- 90	171.9	2595
95.0	273.8	271.3	257.2	273.2	245.3	258.9	260.6	258.5	90- 95	152.9	2748
100.0	252.7	248.6	234.0	243.3	221.9	231.5	236.5	239.9	95-100	136.4	2885
105.0	233.3	229.3	212.3	223.3	192.8	210.1	213.3	216.9	100-105	122.4	3007
110.0	203.8	198.5	181.1	196.4	161.9	182.1	180.9	182.8	105-110	106.0	3113
115.0	164.1	162.1	147.7	159.7	130.8	147.7	144.8	146.5	110-115	85.83	3199
120.0	131.9	125.0	110.9	120.0	90.50	106.2	106.4	105.0	115-120	64.71	3264
125.0	90.57	80.56	78.84	81.14	60.73	70.50	73.90	69.13	120-125	43.17	3307
130.0	67.24	54.00	53.71	53.87	40.68	47.46	48.77	47.43	125-130	27.27	3334
135.0	48.77	39.92	39.45	40.08	28.76	33.85	35.38	33.84	130-135	17.84	3352
140.0	34.12	28.67	27.36	28.72	20.26	23.32	24.94	23.18	135-140	11.71	3364
145.0	23.50	20.01	17.96	20.28	14.03	15.58	17.53	15.40	140-145	7.345	3371
150.0	16.38	14.45	13.14	14.74	11.05	12.00	13.28	11.82	145-150	4.533	3376
155.0	14.11	12.92	11.98	13.13	11.08	11.59	12.52	11.43	150-155	3.210	3379
160.0	13.75	12.76	11.95	12.94	11.26	11.61	12.34	11.46	155-160	2.576	3382
165.0	13.42	12.67	11.91	12.83	11.52	11.70	12.27	11.57	160-165	2.015	3384
170.0	13.17	12.49	11.80	12.54	11.70	11.79	12.31	11.70	165-170	1.448	3385
175.0	12.96	12.29	11.62	12.24	11.77	11.89	12.34	11.82	170-175	0.869	3386
180.0	12.49	11.98	11.48	11.93	12.27	11.97	12.24	11.87	175-180	0.289	3386
DEG	LUMINOUS INTENSITY:cd									UNIT:lm	

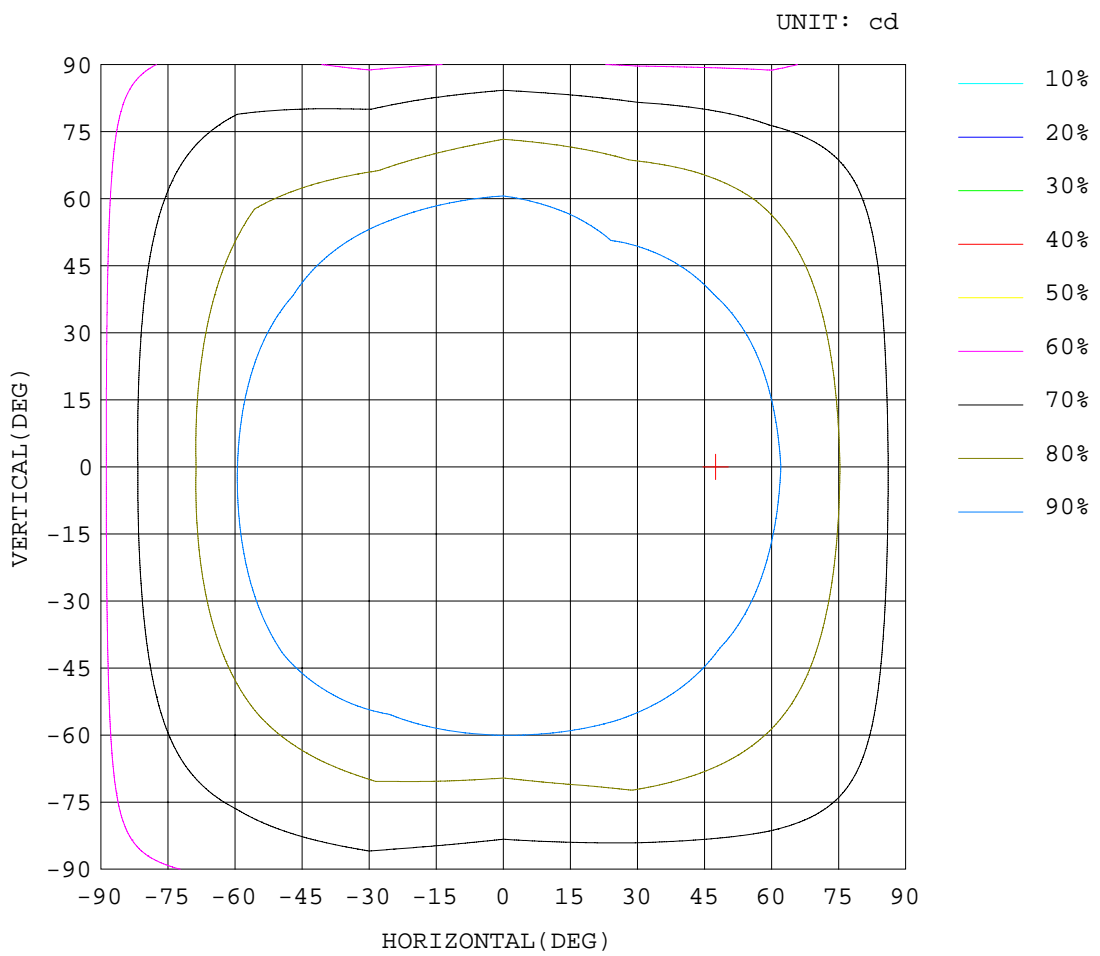
Test System:HOPPO HPG1800  
 Temperature:25.3DEG  
 Operators:  
 Test Date:2016年09月29日

Test Set: 8.0deg/s C-Gamma (TYPE C)  
 Humidity:65.0%  
 Test Distance:6.000 m  
 Remarks:

ISOCANDELA DIAGRAM

Report number:

MANUFACTURER:	Address:	
NAME:	TYPE:	WEIGHT:
SPECIFICATION:	DIMENSION:	SERIAL No.:



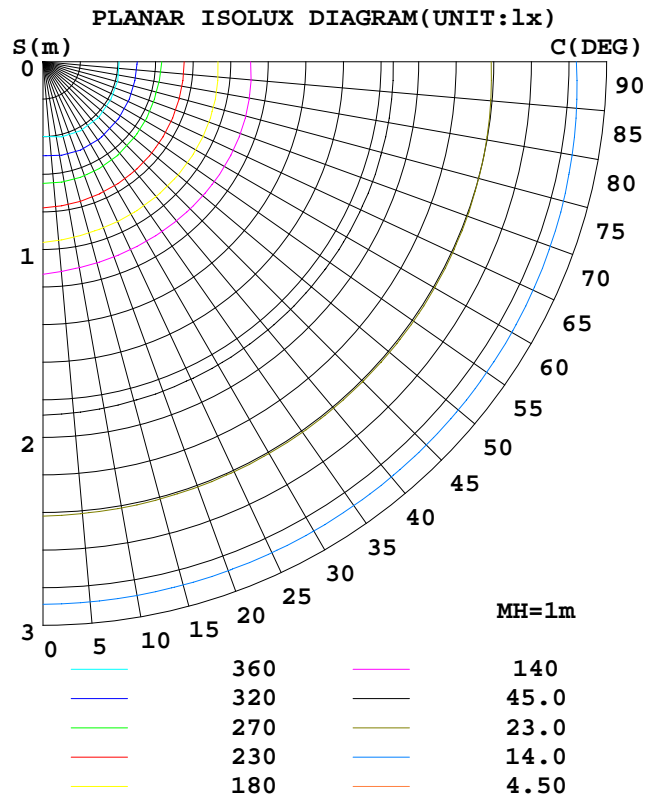
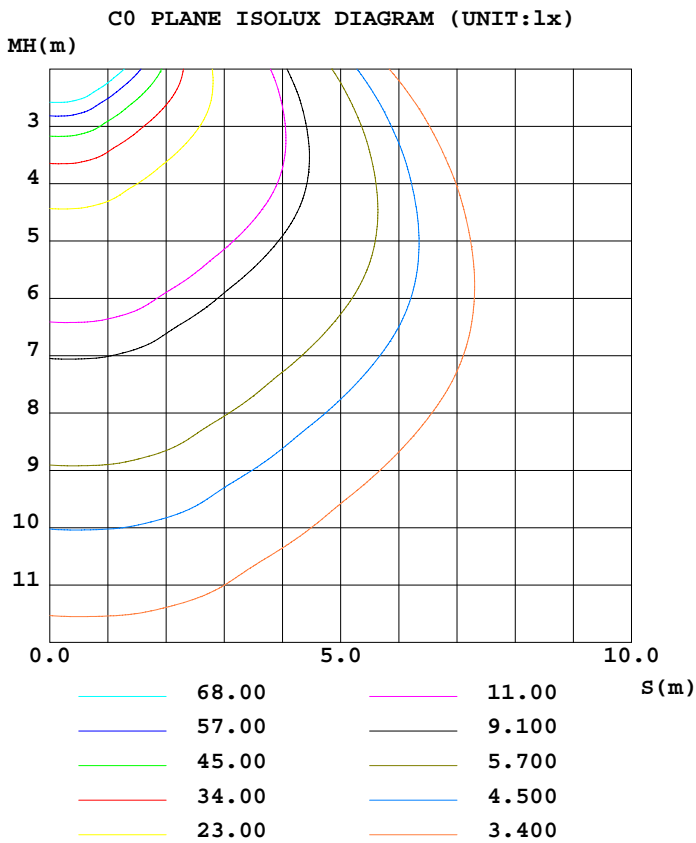
Test System:HOPOO HPG1800  
 Temperature:25.3DEG  
 Operators:  
 Test Date:2016年09月29日

Test Set: 8.0deg/s C-Gamma (TYPE C)  
 Humidity:65.0%  
 Test Distance:6.000 m  
 Remarks:

ISOLUX DIAGRAM

Report number:

MANUFACTURER:	Address:	
NAME:	TYPE:	WEIGHT:
SPECIFICATION:	DIMENSION:	SERIAL No.:



Test System:HOPPO HPG1800  
 Temperature:25.3DEG  
 Operators:  
 Test Date:2016年09月29日

Test Set: 8.0deg/s C-Gamma (TYPE C)  
 Humidity:65.0%  
 Test Distance:6.000 m  
 Remarks:

HONGPU GONIOPHOTOMETERS SYSTEM TEST REPORT

LUMINOUS DISTRIBUTION INTENSITY DATA

Report number:

<b>MANUFACTURER:</b>	<b>Address:</b>	
<b>NAME:</b>	<b>TYPE:</b>	<b>WEIGHT:</b>
<b>SPECIFICATION:</b>	<b>DIMENSION:</b>	<b>SERIAL No.:</b>

UNIT: cd

γ (DEG)	C (DEG)											
	0	30	60	90	120	150	180	210	240	270	300	330
0.0	452	451	451	451	452	452	452	451	451	451	452	452
5.0	458	456	453	449	447	447	447	450	453	456	458	460
10.0	461	464	462	455	448	442	445	450	457	457	462	463
15.0	459	468	467	460	455	444	446	456	457	455	463	461
20.0	449	463	462	454	461	446	447	461	454	450	461	453
25.0	448	456	451	449	461	450	449	461	450	448	456	449
30.0	451	452	444	447	456	452	454	461	450	452	454	458
35.0	461	454	448	447	451	453	457	460	454	460	452	470
40.0	473	461	458	454	449	456	461	458	461	470	453	477
45.0	482	464	468	461	449	463	469	455	467	475	451	475
50.0	479	459	469	464	447	463	468	451	463	472	444	463
55.0	464	450	455	454	442	456	454	442	451	457	433	446
60.0	444	433	435	434	432	439	431	425	428	437	418	426
65.0	422	413	414	409	413	413	405	406	404	414	404	411
70.0	402	400	400	384	395	389	380	392	382	396	390	398
75.0	387	385	385	363	380	371	362	378	363	381	373	381
80.0	370	369	366	350	368	353	346	360	345	361	354	358
85.0	345	342	337	328	346	327	319	334	317	332	322	323
90.0	309	308	301	294	316	296	279	304	281	296	287	285
95.0	274	276	266	257	284	263	245	270	248	261	261	256
100.0	253	254	244	234	254	233	222	243	220	237	242	238
105.0	233	237	222	212	236	211	193	224	197	213	220	214
110.0	204	205	193	181	208	185	162	193	172	181	186	180
115.0	164	168	156	148	172	147	131	159	136	145	147	146
120.0	132	134	117	111	128	113	90.5	112	101	106	101	109
125.0	90.5	79.9	81.1	78.8	84.4	77.8	60.7	71.0	69.9	73.9	63.7	74.5
130.0	67.2	53.0	54.9	53.7	57.2	50.4	40.6	47.6	47.2	48.7	43.2	51.5
135.0	48.7	38.8	41.0	39.4	43.1	37.0	28.7	34.7	32.9	35.3	30.7	36.9
140.0	34.1	27.4	29.8	27.3	30.9	26.5	20.2	24.7	21.8	24.9	21.3	25.0
145.0	23.5	18.7	21.3	17.9	22.2	18.3	14.0	16.9	14.2	17.5	14.0	16.7
150.0	16.3	13.3	15.5	13.1	16.0	13.3	11.0	13.1	10.8	13.2	10.6	12.9
155.0	14.1	11.8	13.9	11.9	14.1	12.0	11.0	12.5	10.5	12.5	10.5	12.3
160.0	13.7	11.8	13.6	11.9	13.8	12.0	11.2	12.5	10.6	12.3	10.6	12.2
165.0	13.4	11.9	13.4	11.9	13.6	12.0	11.5	12.5	10.8	12.2	10.8	12.2
170.0	13.1	11.8	13.1	11.8	13.2	11.8	11.7	12.4	11.0	12.3	11.0	12.3
175.0	12.9	11.7	12.8	11.6	12.8	11.5	11.7	12.5	11.2	12.3	11.2	12.3
180.0	12.4	11.6	12.3	11.4	12.3	11.5	12.2	12.3	11.5	12.2	11.5	12.2

Test System:HOPOO HPG1800  
 Temperature:25.3DEG  
 Operators:  
 Test Date:2016年09月29日

Test Set: 8.0deg/s C-Gamma (TYPE C)  
 Humidity:65.0%  
 Test Distance:6.000 m  
 Remarks: