

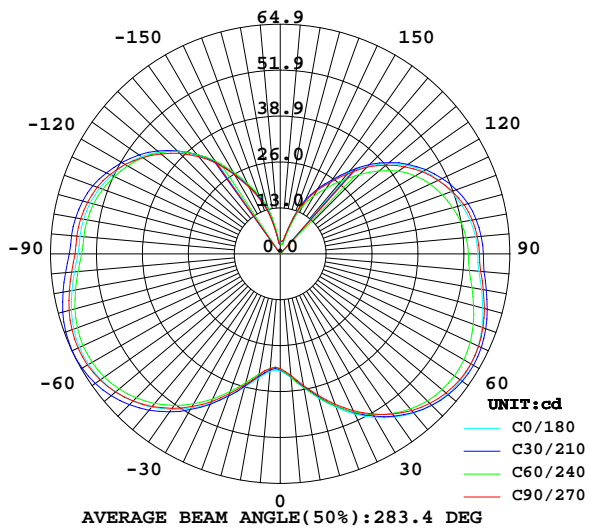
LUMINAIRE PHOTOMETRIC TEST REPORT

Report number:

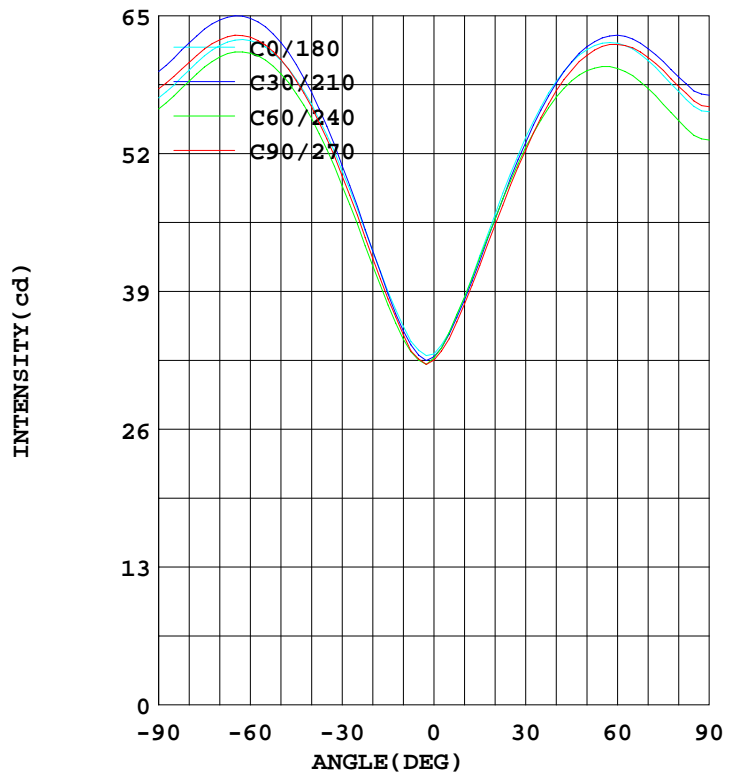
MANUFACTURER:	Address:	
NAME:	TYPE:	WEIGHT:
SPECIFICATION:	DIMENSION:	SERIAL No.:

DATA OF LAMP		Imax(cd)	64.90	S/MH(C0/180)	2.35
MODEL		EFFICIENCY(%)	100.0	S/MH(C90/270)	2.38
NOMINAL POWER(W)	5	TOTAL FLUX(lm)	625.76	Voltage(V)	110.5
RATED VOLTAGE(V)	110	EFFICIENCY(lm/W)	125.2	Current(A)	0.072
NOMINAL FLUX(lm)	625.8	η up(%)	42.7	Power(W)	5.000
LAMPS QUANTITY	1	η down(%)	57.3	Power Factor(PF)	0.620
TEST VOLTAGE(V)	110.6	Effective Flux(lm)	625.1	EEL	0.095

LUMINOUS INTENSITY DISTRIBUTION



LUMINOUS INTENSITY DISTRIBUTION



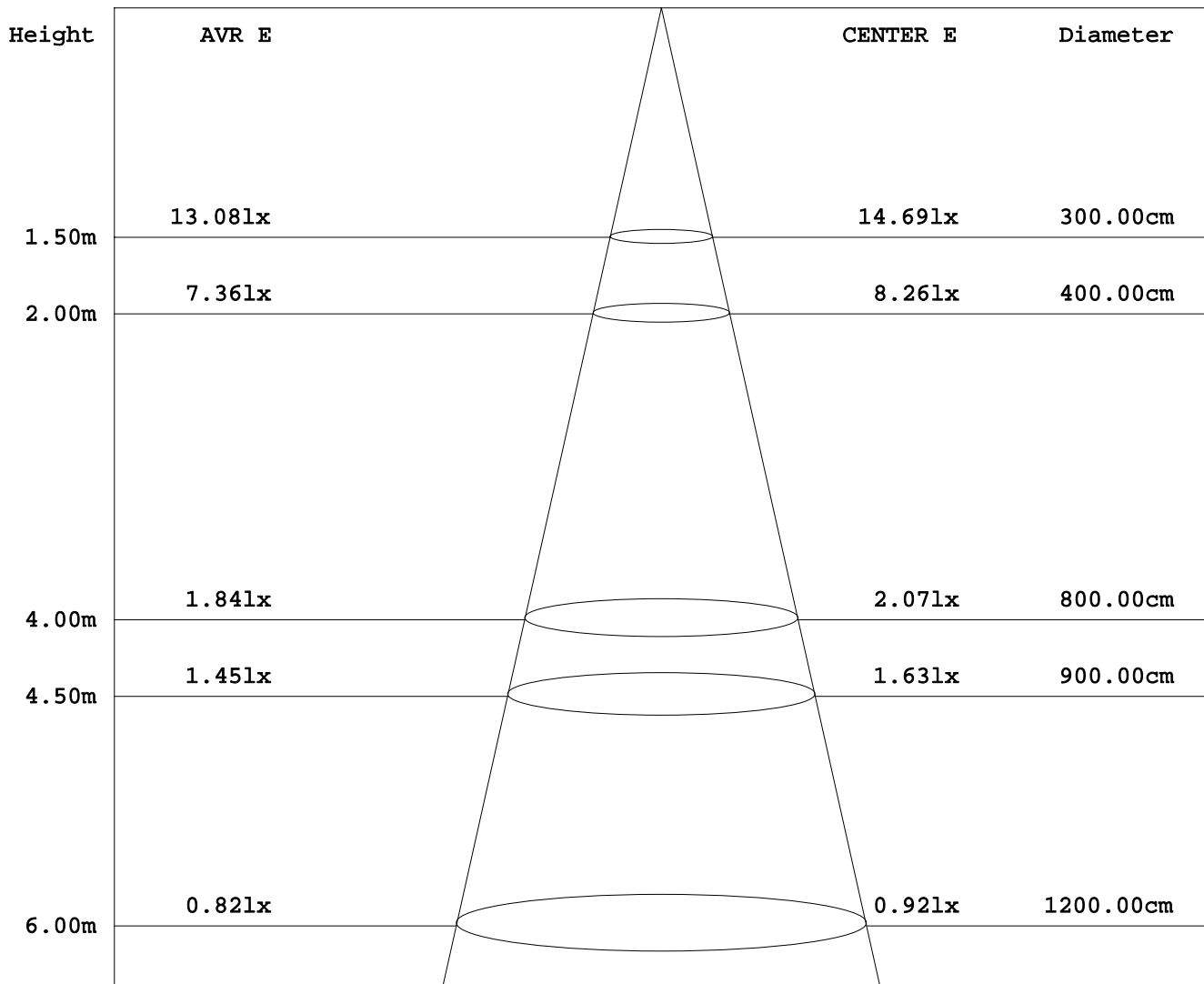
Test System:HOPOO HPG1800
 Temperature:25.3DEG
 Operators:
 Test Date:2015年11月17日

Test Set: 8.0deg/s C-Gamma (TYPE C)
 Humidity:65.0%
 Test Distance:6.000 m
 Remarks:

AVERAGE AND CENTER E Figure

Report number:

MANUFACTURER:	Address:	
NAME:	TYPE:	WEIGHT:
SPECIFICATION:	DIMENSION:	SERIAL No.:



Angle:90.0deg

Test System:HOPPO HPG1800
 Temperature:25.3DEG
 Operators:
 Test Date:2015年11月17日

Test Set: 8.0deg/s C-Gamma (TYPE C)
 Humidity:65.0%
 Test Distance:6.000 m
 Remarks:

HONGPU GONIOPHOTOMETERS SYSTEM TEST REPORT

ZONAL FLUX DIAGRAM

Report number:

MANUFACTURER:	Address:	
NAME:	TYPE:	WEIGHT:
SPECIFICATION:	DIMENSION:	SERIAL No.:

γ	C0	C45	C90	C135	C180	C225	C270	C315	γ	Φ zone	Φ total
5.0	33.40	32.70	32.57	32.63	35.06	34.99	34.48	34.02	0- 5	0.792	0.792
10.0	35.67	34.84	34.88	35.13	38.41	38.28	37.76	37.09	5- 10	2.512	3.305
15.0	38.91	38.17	38.23	38.35	42.29	41.95	41.36	40.75	10- 15	4.537	7.842
20.0	42.76	42.06	42.08	42.15	46.18	45.75	45.21	44.53	15- 20	6.912	14.75
25.0	46.69	46.11	46.11	46.00	50.00	49.44	48.92	48.24	20- 25	9.593	24.34
30.0	50.29	49.84	49.82	49.50	53.45	52.73	52.23	51.60	25- 30	12.50	36.85
35.0	53.67	53.40	53.31	52.72	56.30	55.54	55.29	54.55	30- 35	15.53	52.39
40.0	56.59	56.48	56.34	55.49	58.71	57.90	57.85	57.04	35- 40	18.56	70.95
45.0	58.89	58.93	58.78	57.65	60.51	59.67	59.75	58.96	40- 45	21.49	92.44
50.0	60.69	60.91	60.76	59.38	61.70	60.85	61.16	60.31	45- 50	24.19	116.6
55.0	61.95	62.29	62.13	60.48	62.31	61.47	62.02	61.09	50- 55	26.58	143.2
60.0	62.56	63.01	62.89	61.02	62.31	61.50	62.20	61.29	55- 60	28.57	171.8
65.0	62.60	63.19	63.07	60.94	61.77	60.98	61.88	60.93	60- 65	30.10	201.9
70.0	62.10	62.76	62.63	60.35	60.69	59.94	60.98	60.02	65- 70	31.11	233.0
75.0	61.12	61.86	61.77	59.34	59.25	58.57	59.75	58.77	70- 75	31.63	264.6
80.0	59.79	60.55	60.51	57.99	57.77	57.09	58.24	57.29	75- 80	31.68	296.3
85.0	58.35	59.13	59.18	56.66	56.37	55.72	56.88	55.85	80- 85	31.42	327.7
90.0	57.16	57.88	58.03	55.67	55.87	55.31	56.34	55.02	85- 90	31.02	358.7
95.0	56.80	57.47	57.74	55.49	55.43	54.88	55.90	54.68	90- 95	30.71	389.5
100.0	56.44	57.04	57.27	54.99	54.54	54.01	55.11	53.96	95-100	30.23	419.7
105.0	55.65	56.23	56.41	54.10	53.13	52.70	53.78	52.75	100-105	29.31	449.0
110.0	54.36	54.88	55.07	52.74	51.44	50.88	51.73	51.04	105-110	27.94	476.9
115.0	52.56	52.97	53.10	50.79	49.35	48.59	49.21	48.90	110-115	26.15	503.1
120.0	50.57	50.77	50.61	48.40	46.79	45.82	46.47	46.47	115-120	24.01	527.1
125.0	47.95	48.09	47.48	45.57	43.74	42.47	42.94	43.41	120-125	21.55	548.7
130.0	44.71	44.89	43.92	42.40	39.70	38.32	38.98	39.52	125-130	18.85	567.5
135.0	40.89	41.18	40.17	38.82	34.95	33.82	34.70	35.20	130-135	15.95	583.5
140.0	36.25	36.72	35.89	34.34	30.16	28.81	29.48	30.25	135-140	12.98	596.5
145.0	31.35	31.82	31.10	29.41	25.19	24.06	24.73	25.37	140-145	10.11	606.6
150.0	26.24	26.45	25.81	24.31	20.91	20.12	20.59	21.16	145-150	7.508	614.1
155.0	21.45	21.52	20.80	19.58	16.74	15.80	16.16	17.10	150-155	5.283	619.4
160.0	17.38	17.19	16.05	15.48	11.23	9.684	10.90	12.45	155-160	3.433	622.8
165.0	12.49	12.54	11.05	9.990	4.032	3.978	5.364	5.832	160-165	1.828	624.6
170.0	5.688	6.228	5.292	4.176	2.952	3.240	3.672	3.276	165-170	0.732	625.4
175.0	3.708	3.258	2.808	3.276	2.988	3.186	3.600	3.222	170-175	0.259	625.6
180.0	3.456	3.186	2.916	3.204	3.204	3.132	3.420	3.186	175-180	0.077	625.7
DEG	LUMINOUS INTENSITY:cd									UNIT:lm	

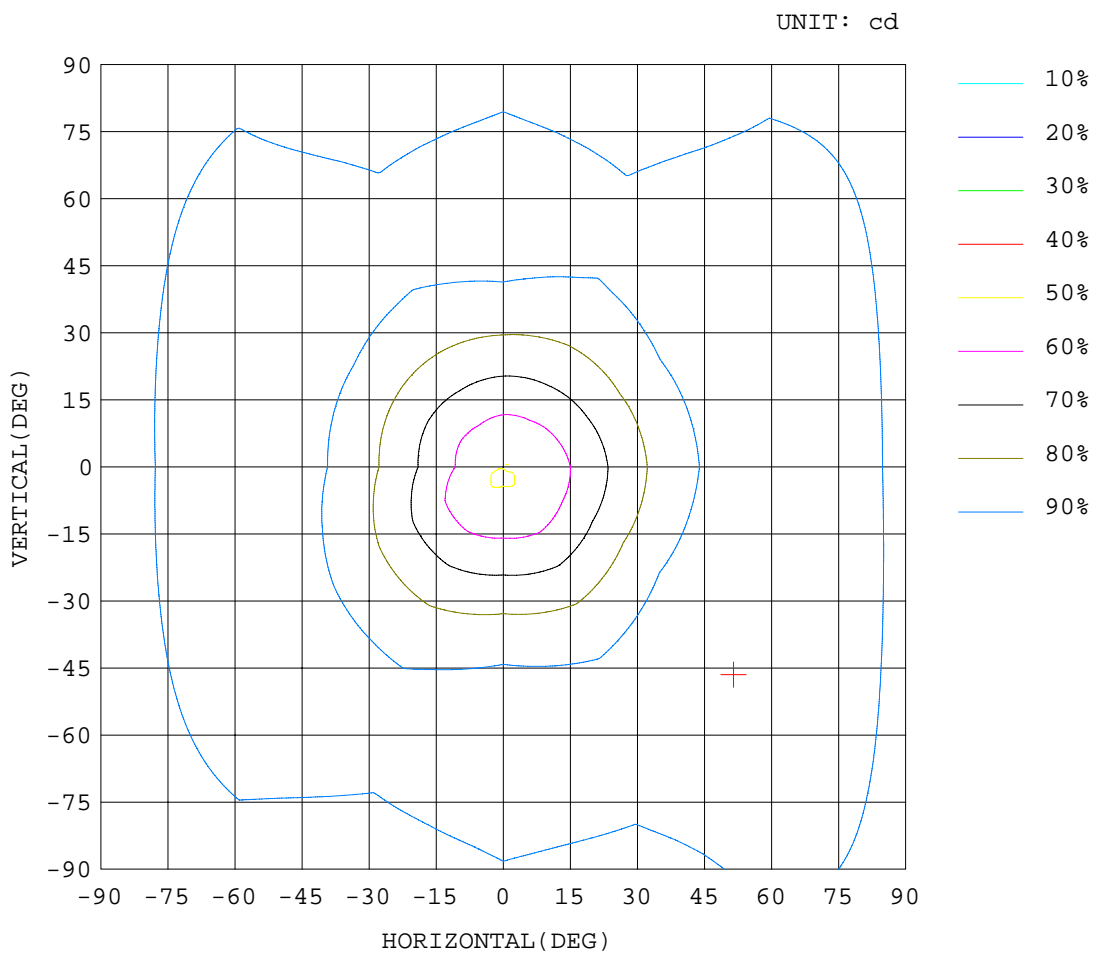
Test System:HOPPO HPG1800
 Temperature:25.3DEG
 Operators:
 Test Date:2015年11月17日

Test Set: 8.0deg/s C-Gamma (TYPE C)
 Humidity:65.0%
 Test Distance:6.000 m
 Remarks:

ISOCANDELA DIAGRAM

Report number:

MANUFACTURER:	Address:	
NAME:	TYPE:	WEIGHT:
SPECIFICATION:	DIMENSION:	SERIAL No.:



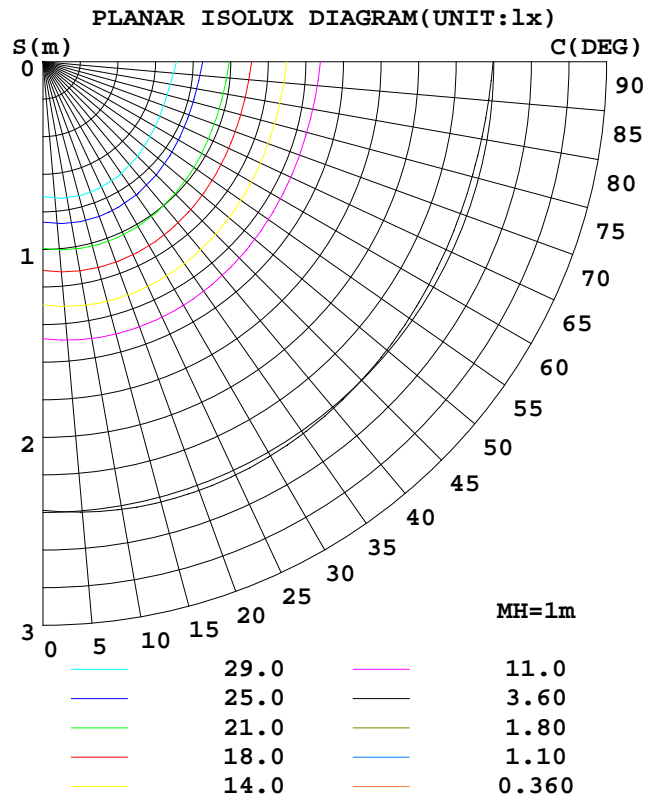
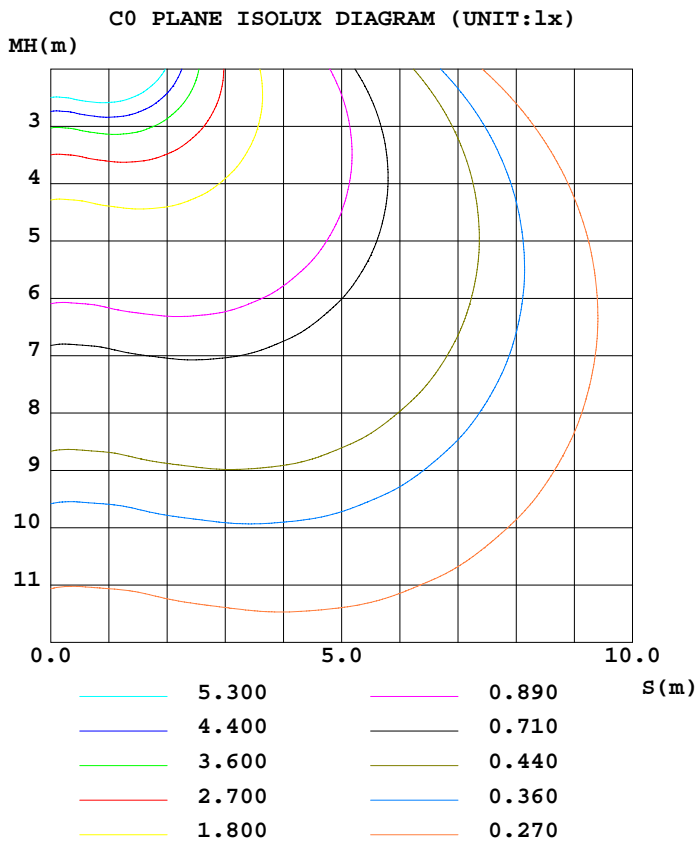
Test System:HOPOO HPG1800
 Temperature:25.3DEG
 Operators:
 Test Date:2015年11月17日

Test Set: 8.0deg/s C-Gamma (TYPE C)
 Humidity:65.0%
 Test Distance:6.000 m
 Remarks:

ISOLUX DIAGRAM

Report number:

MANUFACTURER:	Address:	
NAME:	TYPE:	WEIGHT:
SPECIFICATION:	DIMENSION:	SERIAL No.:



Test System:HOPPO HPG1800
 Temperature:25.3DEG
 Operators:
 Test Date:2015年11月17日

Test Set: 8.0deg/s C-Gamma (TYPE C)
 Humidity:65.0%
 Test Distance:6.000 m
 Remarks:

HONGPU GONIOPHOTOMETERS SYSTEM TEST REPORT

LUMINOUS DISTRIBUTION INTENSITY DATA

Report number:

MANUFACTURER:	Address:	
NAME:	TYPE:	WEIGHT:
SPECIFICATION:	DIMENSION:	SERIAL No.:

UNIT: cd

γ (DEG)	C (DEG)											
	0	30	60	90	120	150	180	210	240	270	300	330
0.0	33.0	32.7	32.6	32.4	32.3	32.1	33.0	32.7	32.6	32.4	32.3	32.1
5.0	33.4	32.9	32.4	32.5	32.3	32.8	35.0	34.9	35.0	34.4	34.3	33.6
10.0	35.6	35.2	34.4	34.8	34.6	35.6	38.4	38.1	38.4	37.7	37.6	36.5
15.0	38.9	38.7	37.6	38.2	37.8	38.8	42.2	41.7	42.1	41.3	41.2	40.2
20.0	42.7	42.7	41.3	42.0	41.5	42.7	46.1	45.7	45.7	45.2	44.8	44.1
25.0	46.6	46.9	45.2	46.1	45.3	46.6	50.0	49.5	49.3	48.9	48.4	48.0
30.0	50.2	50.7	48.8	49.8	48.8	50.1	53.4	52.9	52.5	52.2	51.6	51.5
35.0	53.6	54.5	52.3	53.3	52.0	53.3	56.3	56.0	55.0	55.2	54.2	54.8
40.0	56.5	57.7	55.2	56.3	54.8	56.1	58.7	58.5	57.2	57.8	56.4	57.6
45.0	58.8	60.2	57.5	58.7	56.9	58.3	60.5	60.5	58.7	59.7	58.1	59.8
50.0	60.6	62.3	59.4	60.7	58.6	60.1	61.7	61.9	59.7	61.1	59.1	61.4
55.0	61.9	63.8	60.7	62.1	59.6	61.2	62.3	62.8	60.1	62.0	59.6	62.5
60.0	62.5	64.6	61.3	62.8	60.1	61.8	62.3	63.0	59.9	62.2	59.6	62.9
65.0	62.6	64.9	61.4	63.0	60.0	61.8	61.7	62.7	59.2	61.8	59.0	62.8
70.0	62.1	64.5	61.0	62.6	59.4	61.2	60.6	61.8	58.0	60.9	57.9	62.1
75.0	61.1	63.6	60.0	61.7	58.4	60.2	59.2	60.5	56.5	59.7	56.5	60.9
80.0	59.7	62.3	58.7	60.5	57.0	58.9	57.7	59.1	55.0	58.2	55.0	59.5
85.0	58.3	60.9	57.3	59.1	55.6	57.6	56.3	57.8	53.6	56.8	53.6	58.1
90.0	57.1	59.6	56.1	58.0	54.5	56.7	55.8	57.4	53.2	56.3	52.8	57.1
95.0	56.8	59.2	55.7	57.7	54.3	56.6	55.4	57.0	52.7	55.9	52.5	56.8
100.0	56.4	58.7	55.3	57.2	53.9	56.0	54.5	56.1	51.8	55.1	51.8	56.1
105.0	55.6	57.8	54.6	56.4	53.1	55.1	53.1	54.9	50.4	53.7	50.5	55.0
110.0	54.3	56.3	53.3	55.0	51.8	53.6	51.4	52.9	48.7	51.7	48.8	53.2
115.0	52.5	54.2	51.7	53.1	50.1	51.4	49.3	50.4	46.7	49.2	46.8	50.9
120.0	50.5	51.7	49.8	50.6	48.2	48.6	46.7	47.5	44.0	46.4	44.4	48.4
125.0	47.9	48.7	47.4	47.4	45.8	45.3	43.7	44.1	40.8	42.9	41.4	45.3
130.0	44.7	45.2	44.5	43.9	42.9	41.9	39.7	40.1	36.4	38.9	37.5	41.5
135.0	40.8	41.2	41.1	40.1	39.3	38.3	34.9	35.8	31.8	34.7	33.1	37.2
140.0	36.2	36.6	36.7	35.8	34.8	33.8	30.1	30.6	27.0	29.4	28.2	32.2
145.0	31.3	31.5	32.1	31.1	30.0	28.8	25.1	25.5	22.6	24.7	23.6	27.0
150.0	26.2	26.0	26.8	25.8	24.9	23.6	20.9	21.3	18.9	20.5	19.7	22.6
155.0	21.4	21.1	21.9	20.8	20.5	18.5	16.7	16.8	14.7	16.1	15.8	18.3
160.0	17.3	16.5	17.7	16.0	16.7	14.2	11.2	10.5	8.78	10.9	11.0	13.8
165.0	12.4	11.5	13.5	11.0	11.9	8.02	4.03	4.71	3.24	5.36	5.29	6.37
170.0	5.68	5.47	6.98	5.29	5.32	3.02	2.95	3.67	2.80	3.67	2.80	3.74
175.0	3.70	2.80	3.70	2.80	3.70	2.84	2.98	3.56	2.80	3.60	2.84	3.60
180.0	3.45	2.91	3.45	2.91	3.49	2.91	3.20	3.34	2.91	3.42	2.95	3.42

Test System:HOPOO HPG1800
 Temperature:25.3DEG
 Operators:
 Test Date:2015年11月17日

Test Set: 8.0deg/s C-Gamma (TYPE C)
 Humidity:65.0%
 Test Distance:6.000 m
 Remarks: